

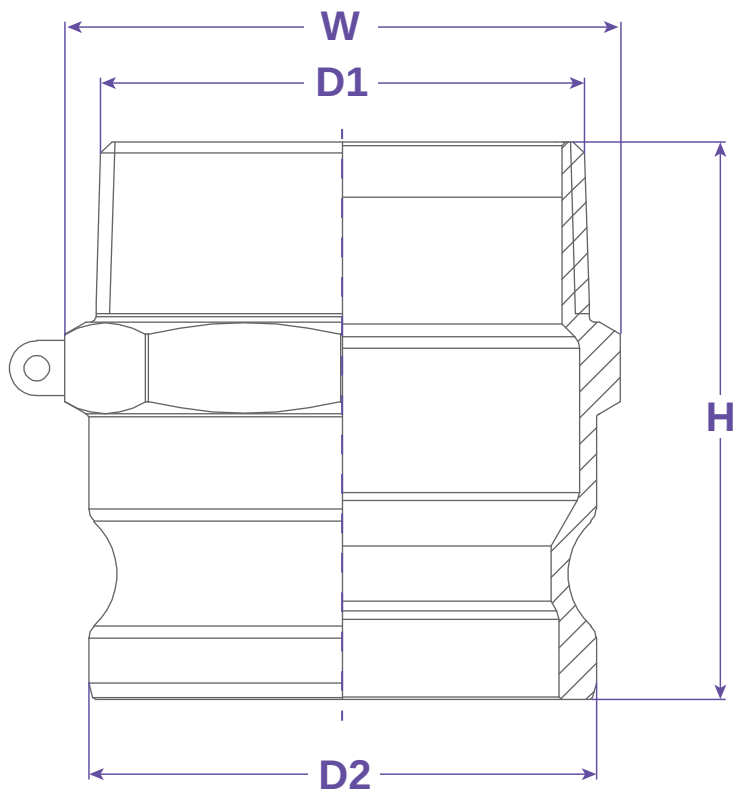


**SEALFAST**  
THE SIMPLE SOLUTION

**COUPLINGS  
& ACCESSORIES**



**TYPE F**



#### FEATURES & APPLICATIONS:

##### • General Uses:

A camlock fitting is a type of coupling that is used to connecting hose and or pipes together that transfers liquids, powders and granules. A straight through connection is made that maintains the pipe size and allows the free flow of materials being transferred.

Size	Working PSI	D1	D2	H	W	PART #
1/2"	125	1/2" NPT	0.957	2.028	0.976	F050SS, SS304
1/2" x 3/4"						F05075SS
3/4"	150	3/4" NPT	1.264	2.126	1.280	F075SS, SS304
1"	150	1" NPT	1.445	2.559	1.465	F100SS, SS304
1-1/4"	150	1-1/4" NPT	1.791	2.894	1.811	F125SS, SS304
1-1/2"	150	1-1/2" NPT	2.102	2.933	2.126	F150SS, SS304
2"	150	2" NPT	2.480	3.268	2.520	F200SS, SS304
2-1/2"	150	2-1/2" NPT	2.984	3.583	3.071	F250SS, SS304
3"	150	3" NPT	3.602	3.602	3.622	F300SS, SS304
4"	150	4" NPT	4.705	3.839	4.784	F400SS, SS304
5"	75	5" NPT	5.728	4.449	5.827	F500SS, SS304
6"	75	6" NPT	6.929	4.685	6.909	F600SS, SS304
8"	75	8" NPT	8.307	8.921	9.921	F800SSPTK

**WARNING:** Cam & Groove Couplings should **NOT** be used with any compressed gas, including steam or air. Metal fittings should **NOT** be used with Polypropylene Cam & Groove. Dust Caps and Dust Plugs are **NOT** designed for pressure applications.

Note: All Seal Fast Cam & Groove Stainless Bodies are 316 Investment with 304 Handles.

#### TITLE **TYPE F - MALE ADAPTER X MALE NPT**

##### DISCLAIMER

All drawings and specifications are subject to change without notice. Drawings represent general dimensions of our products. Seal Fast cannot guarantee the dimensions in the drawing will exactly match those in the drawing. This drawing is the property of Seal Fast Inc. Copying or reproduction of this drawing is expressly prohibited.

##### MATERIAL

SUS 316, 304

**DRAWING NOT TO SCALE**

##### PART #

F...SS, SS304

